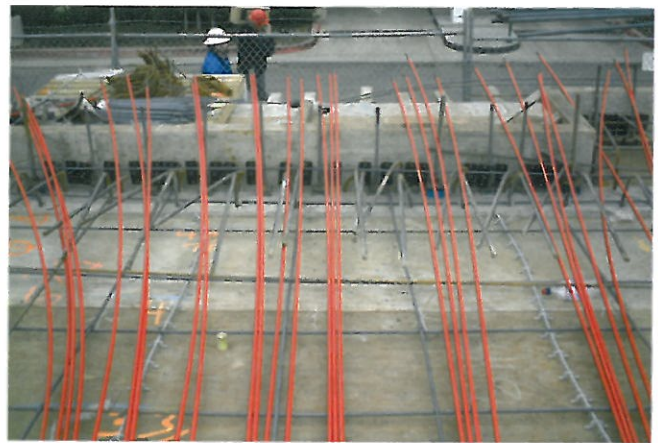


(a) Live ends are secured to the bulkhead and provided with anti-bursting reinforcement (P419)



(b) Tendons are lined up with the anchorage devices, ready to be cut and threaded through (P421)

FIGURE 2.5.1C-4



FIGURE 2.5.1C-5 Tendons are secured in Position and Height to Support Bars (P420)

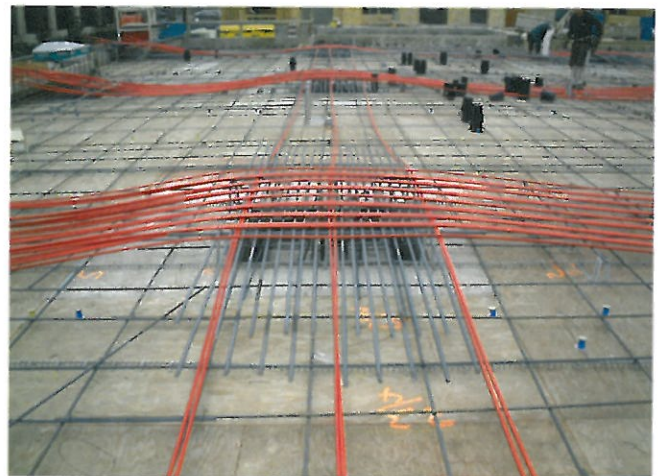


FIGURE 2.5.1C-6 Positioning of Grouped Tendons over the Supports (P422)



(a) Minimum of two tendons over support (P423)



(b) Distributed tendons placed parallel (P424)

FIGURE 2.5.1C-7 Distributed Tendons are Placed, with Minimum of Two Strands over Each Support.