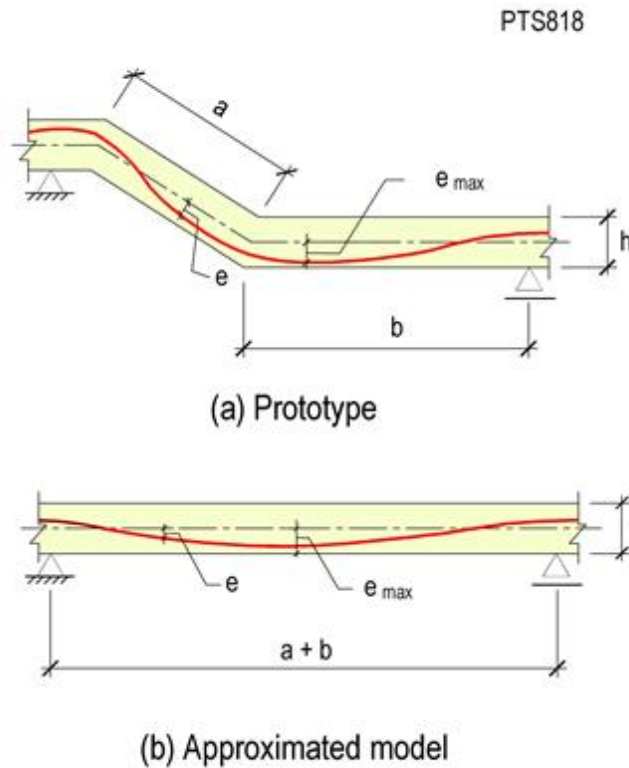


APPROXIMATE MODELING OF RAMPS FOR DESIGN



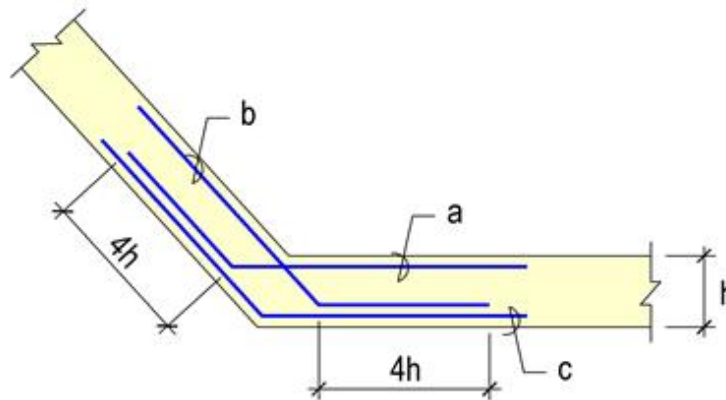
- Model the ramp as a straight member of uniform thickness with adjusted length as shown in (b).
- Detail the tendon in the prototype (a) according to the eccentricities obtained from the analysis model



Add reinforcement at the bent as shown below

Approximate modeling of ramps for design

PTS819



add 3#4 (12mm) bars per 0.5 inch (13mm) tendon
Added reinforcement at bent

Added Reinforcement at Angle Change in Slab